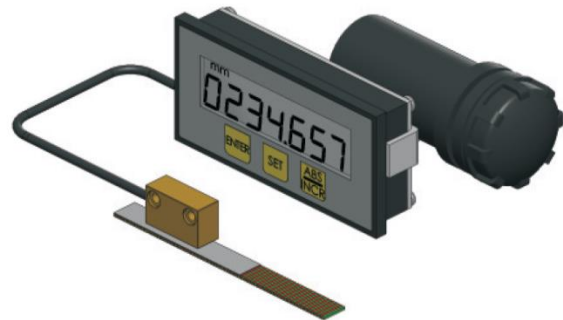


Datasheet

- Measurement of absolute and incremental dimension
- reliable measurement for the reading of length and angle in the engineering and plant construction
- Battery powered, quasi absolute
- LCD display
- Unit mm/inch/angle measurement switchable
- Programmable offset value
- Programmable counting direction
- Retrofitting are very easy and at anytime possible

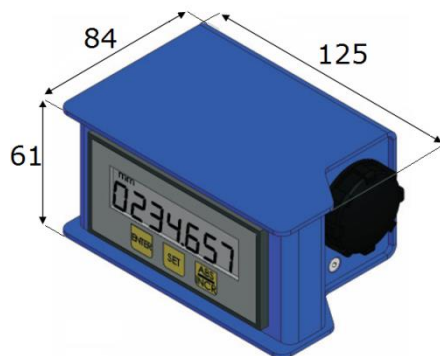


Technical Data

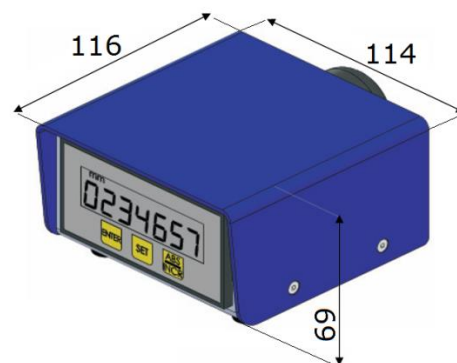
Housing	Aluminium; powder-coated	
Sensor	SMR5	
Display	C10	
Gap (Sensor - Magnetic tape)	0,1 to 2 mm	
Resolution	0,1 mm	
Power Supply	1,5 VDC	
Lifetime	ca. 12 Month	
Gauging	Magnetic tape	MT50
	Magnetic ring	MRO; MRI-A

Dimensions

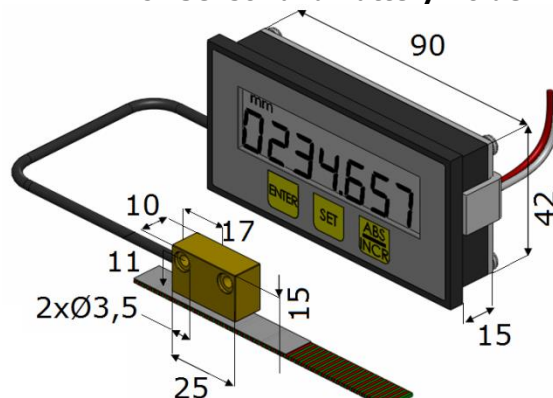
KIT-III Battery Change Right



KIT-IV Battery Change Back



KIT-I incl. Sensor and Battery Holder



Measures for DIN recess 48 x 96mm

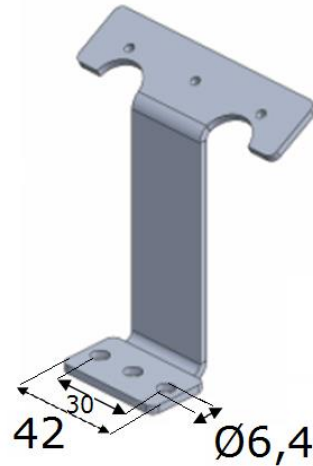
Datasheet

Accessory

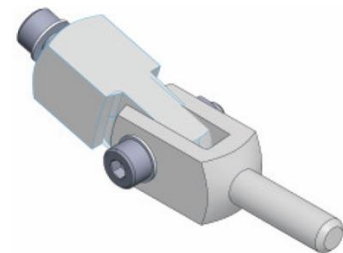
Batters Holder



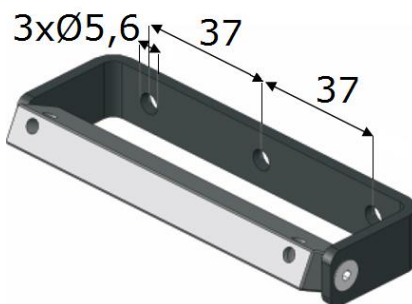
Angle Bracket



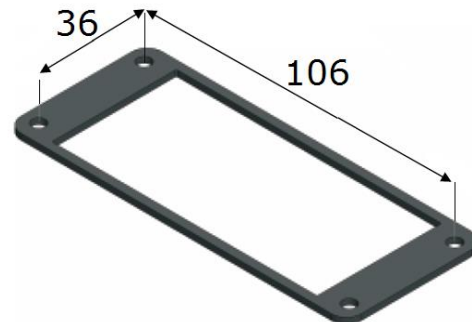
GAM



Mounting Bracket



Retaining Plate



Ordering Example

Type **C10** - **KIT-I** - **0,3** - **BL** - **HW**

Housing

KIT-I = Housing for Installation
KIT-III = Housing for Building Short
KIT-IV = Housing for Building Long

Cable Length [m]

0,3/0,5/1,0/1,5/2,0

Housing Color

BL = blue RAL 5015
SG = slate grey RAL 7015

Mount

HW = Angle bracket
HBL = Retaining Plate
HB = Mounting Bracket
GAM = Fork Mount External Thread