

Datasheet

- Position indicator with analogue scale (I60) or rather torque support (I60F)
- Measurement of length and angle with gravity principle
- Window of shock-proof polycarbonate
- Available for several hand wheels
- IP-Rating: IP64



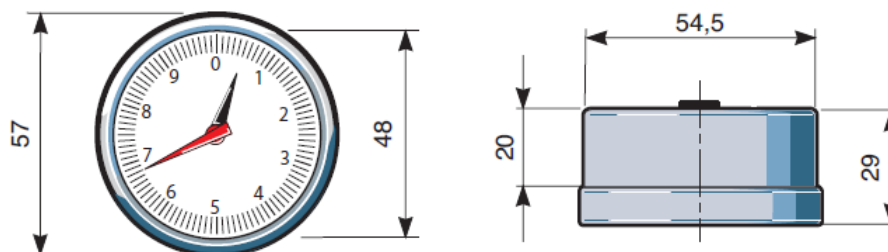
Mechanical Data

In general	
Material	
Case	Metal or Technopolymer
Window	shock-proof Polycarbonate
Indication	analogue dial scale
Counting Direction	DX clockwise SX anti-clockwise
Hand	
Big Hand	1:1 ratio with hand wheel
Little Hand	Transmission Ratio depending on the required shaft revolution
Transmission Ratio	2:1; 4:1; 6:1; 10:1; 12:1; 20:1; 24:1; 30:1; 36:1; 40:1; 60:1; 100:1; 120:1; 200:1
Dial Scale	2-0-2; 0-6; 3-0-3; 0-10; 0-12; 6-0-6; 0-20; 0-24; 0-30; 0-36; 18-0-18; 0-40; 0-50; 0-60; 0-80; 0-100
Operating Temperature	< 80°C
IP-Rating	IP64
Optional	oil-filled on request
I60	
Accessories	
Hand Wheel	P70, P100, P100P
Applications	horizontal or slightly inclined shafts
I60F (with torque support)	
Accessories	
Hand Wheel	P100FP
Applications	Shafts with any position

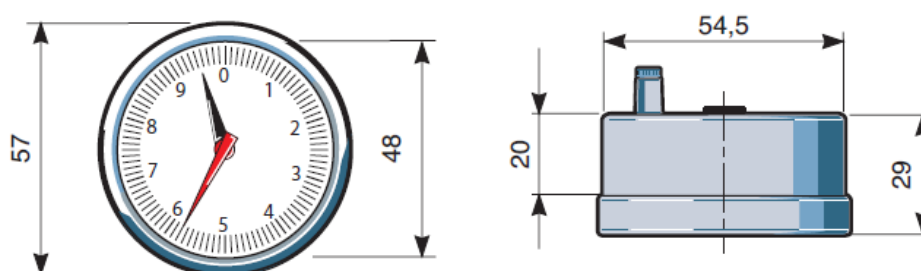
Datasheet

Dimensions

I60



I60F (with torque support)



Ordering Example

Type I60 - 30 - DX - 12 - 0-30

I60

I60F = with torque support

Transmission Ratio

30 = 30:1

For further Information, see table

Counting Direction

DX = clockwise

SX = anti clockwise

Number of Hands

1Z = 1 hand

2Z = 2 hands

Dial Scale

0-30 = 0-30

For further Information, see table

Assembling

- Set the drive shaft on the initial adjusting position
- Fix the hand wheel with the pressure screw on the shaft and take care that the instrument is set at the zero (initial) position of the pointers
- Concerning the fixed reaction indicator bear in mind that the lock pin is adjusted on zero at 12 hour.
- Carry out the assembling as described and fix the pin with a bracket.