

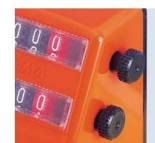
Datasheet

Characteristics

- 2 counters, each with 5 digits to adjust and directly read a motion (or an angle)
- Impact resistant and self-extinguishing Polymer housing
- Various view options available
- Protection class IP54
- Optionally also with one roller for positioning and zero-setting AZZ/BZZ or two rollers 2AZZ/2BZZ (4 digits counter)

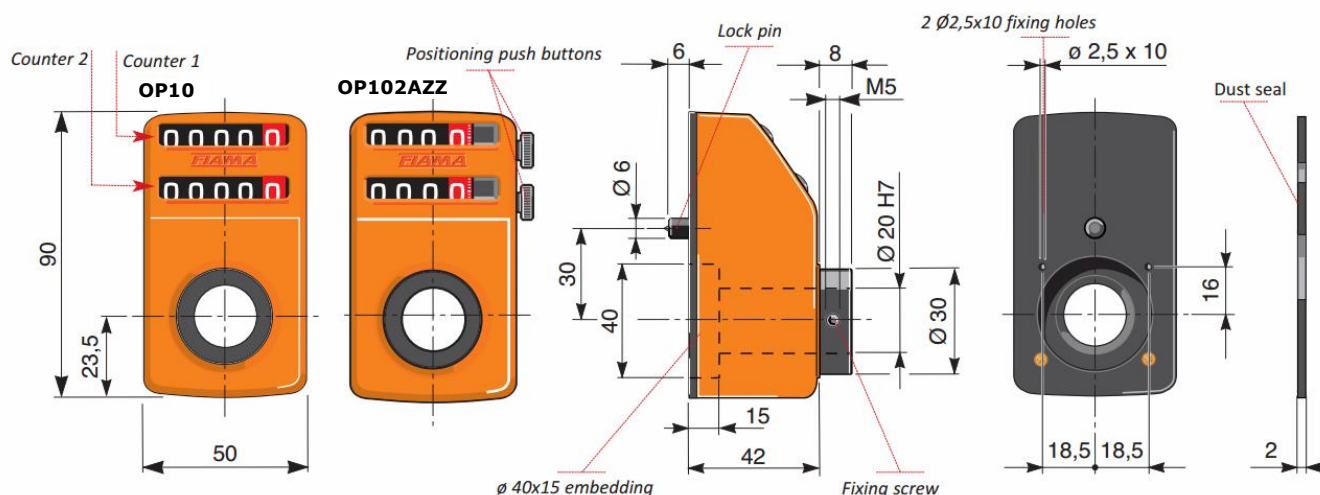


Positioning push button



Double positioning push-button

Dimensions



Introduce the indicator through the hollow shaft and set the lock pin into the $\varnothing 6$ arranged hole. Set the instrument on the inner (zero) value and block the fixing screw.

Mechanical data

Material	housing hollow shaft	technopolymer, self extinguishing steel
Digits	1 red digits 2 red or 5 black digits	decimals (standard) hundredths (on request)
Digit height		5,5 mm
Reading		until 99999
Shaft		$\varnothing 20$ mm
Colour		orange; RAL2004 black; RAL9005
Operating temperature		max. 70°C
Options on request		measure in Inch, special ratios attachments anodized aluminium shaft block flange (FL-B)

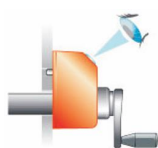
Datasheet

Pitch

pitch mm	Measure after 1 revolution mm	Maximum rotation speed rpm
0,25	00025	200
0,50	00050	100
1,00	00100	60
1,0	00010	300
1,5	00015	200
2,0	00020	200
2,5	00025	200
3,0	00030	100
4,0	00040	100
5,0	00050	100
6,0	00060	100
7,5	00075	60
8,0	00080	60
10,0	00100	60

Mounting position

View A - horizontal



View B - vertical



The increasing direction of counters **1** and **2** has the point of reference always in counter **1**.
For example: **SX** shows that counter **1** turns anti-clockwise and counter **2** turns clockwise; **DX-DX** shows that both counters turn clockwise.

Ordering example

Type **OP10** - **A** - **2,5** - **DX-DX** - **20** - **R**

Ansicht

A - horizontal
B - vertical
AZZ- horizontal with positioning push button
BZZ- vertical with positioning push button
2AZZ - horizontal with 2 positioning push buttons
2BZZ - vertical with 2 positioning push buttons

Pitch

Measure after one revolution
see table

Counting direction

DX - DX
DX - SX
SX - DX
SX - SX

Shaft diameter [mm]

Ø 20
smaller diameters with reducing bush

Box colour

R - orange
G - black