

Datasheet



- robust design and easy replacement of measuring wheels available primarily with measuring wheel circumference 200 mm
- with integrated LCD display, programmable resolution
- up to 500 mm/revolution
- power supply via 3,6 VDC battery, battery lifetime 4 years.

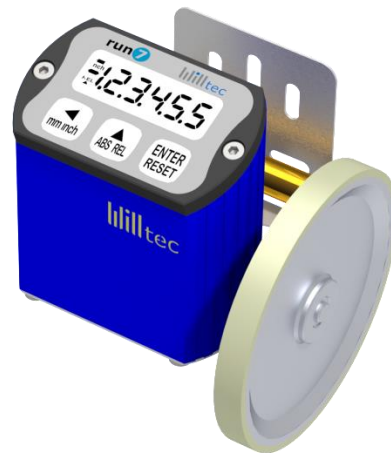
standard variants

MZ/E-RUN7-P-B-200/G-2S-01



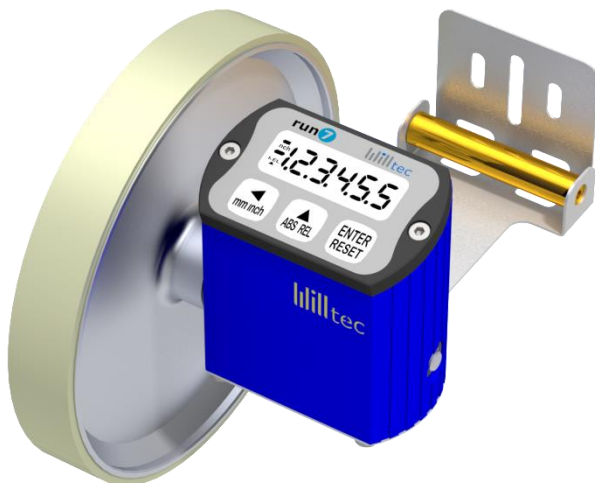
item no.:17700

MZ/E-RUN7-P-B-304/G-1L-FI



item no.:19887

MZ/E-RUN7-P-B-500/G-1R-FII



item no.:17703

MZ/E-RUN7-P-B-200/G-1L-FIII



item no.:18215

i Note

- exact dimensions of the desired variant are available on request

Datasheet

Mechanical Data

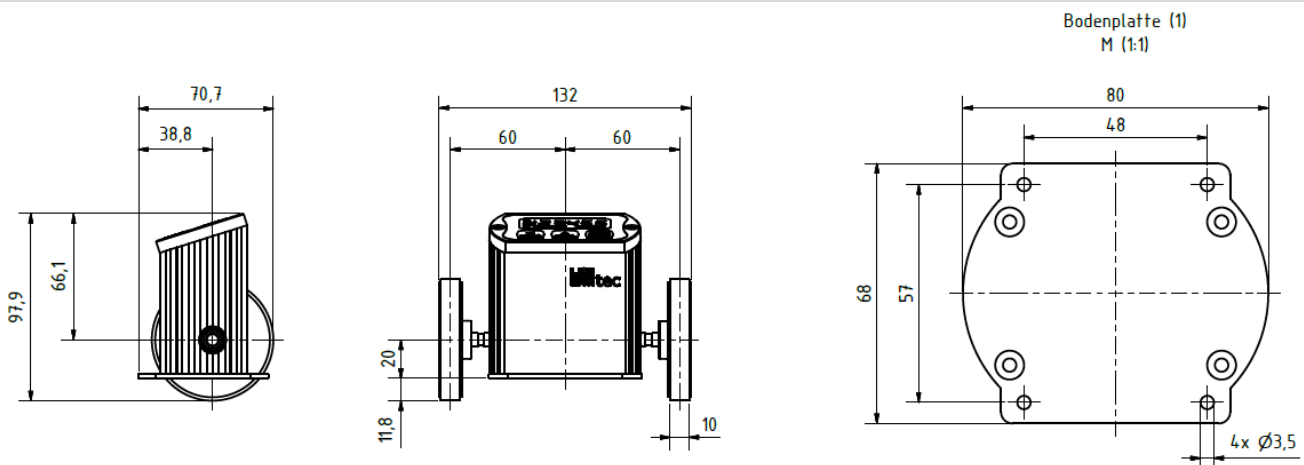
Measuring Wheel			
Circumference [C]	200 mm	304.8 mm (=12 inches)	500 mm
Through Bore	Ø7 mm		
Material	Blank surface	aluminum aluminum [R]; polyurethane [G; RI; N]; rubber [GG; GR]	
System			
Weight	~ 0.5 – 1.5 kg depending on design		
Repeatability	±0.4 %		
Movement Speed	< 400 m/min		
IP-Rating	IP54		
Operating Temperature	0-50°C		
Keyboard	3 membrane keys		
Resolution [m]	1, 0.1 (standard); 0.01; 0.001 freely programmable		

Designs



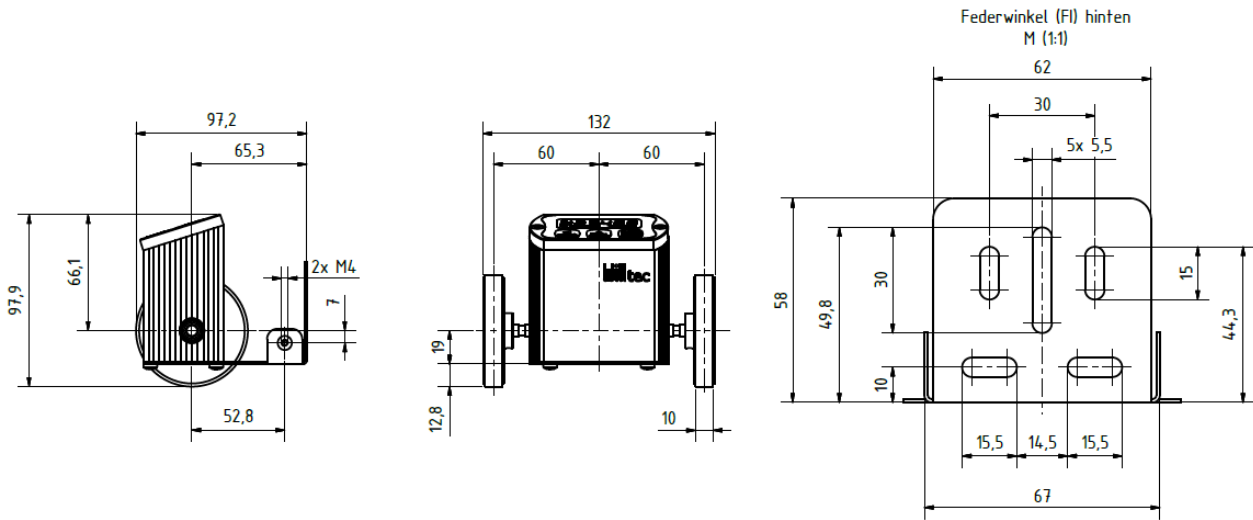
Dimensions

Base Plate - 01

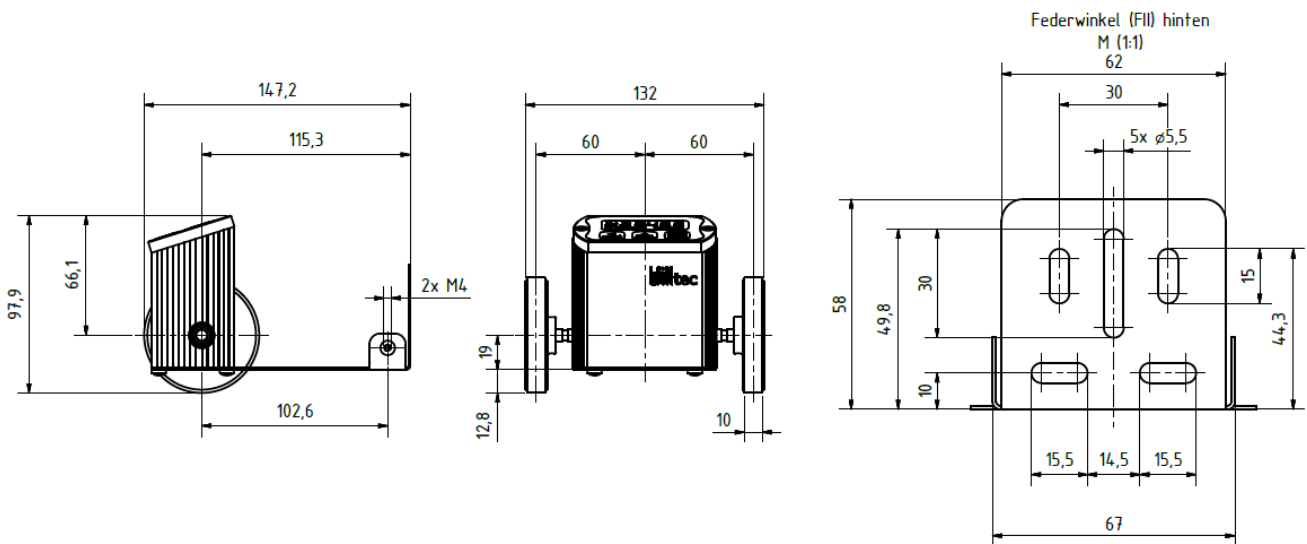


Datasheet

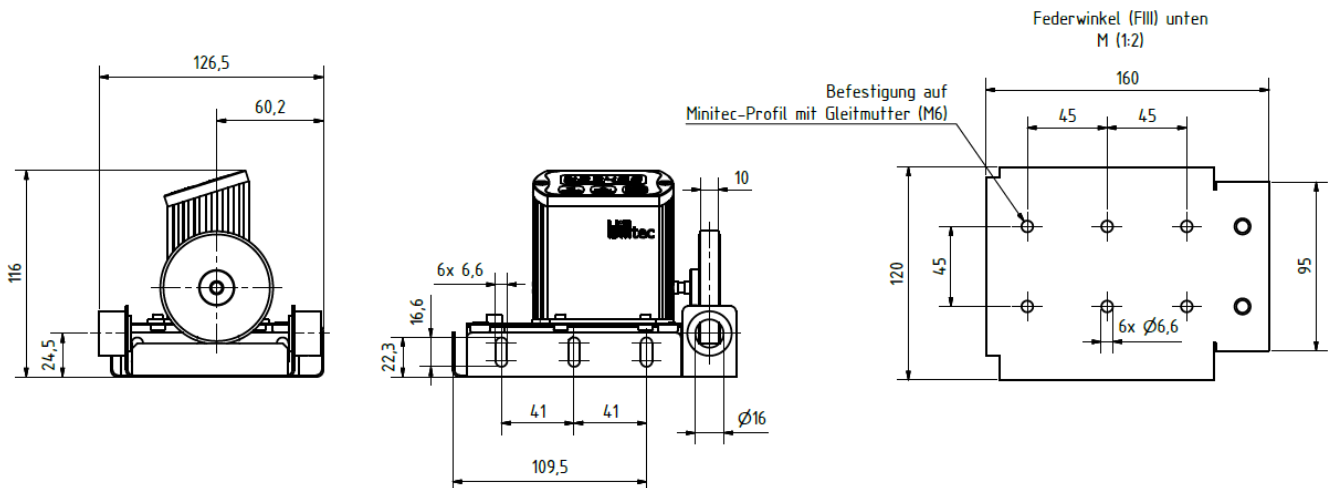
Spring bracket - FI



Spring bracket - FII



Spring bracket - FIII



Datasheet

Ordering Example

Meter Counter Electrical **MZ/E** - **RUN7** - **P** - **B** - **500/G** - **2S** - **FI**

Indicator

RUN7 = measurement indicator F8P

Resolution

P = freely programmable

Power Supply

B = battery

Measuring Wheel Circumference [C]/ Surface

500; 304; 200

Measuring Wheel Circumference [C]/ **Surface**

/G = smooth

/RI = corrugated

/N = studded

/R = crisscross knurled

/GG = rubber smooth

/GR = rubber knurled

Measuring Wheels/ Axis Position

XL = without measuring wheel; left handed

XR = without measuring wheel; right handed

XS = without measuring wheel; symmetrical

1L = 1 measuring wheel; left handed

1R = 1 measuring wheel; right handed

2S = 2 measuring wheels; symmetrical

Variation

1 = base plate

FI = spring bracket I

FII = spring bracket II

FIII = spring bracket III

i Note

- further designs which cannot be generated from the sample order are available as special designs on request

***Measuring Wheel Variants for RUN7** **MR** - **500** - **AL** - **07** - **G**

*only use them for subsequent accessory orders

Circumference (U)

500; 304; 200

Blank Material

AL = aluminum

Boring Diameter (d = mm)

07 = $\varnothing 7$ mm

Surface Profile

G = smooth

RI = corrugated

N = studded

R = crisscross knurled