

Datasheet

- Position indicator with analogue scale (I90, I90F) or rather analogue-digital scale (IN90, IN90F)
- With torque support (I90F, IN90F)
- Measurement of length and angle with gravity principle
- Available for several hand wheels
- Front sided dimensional correction screw
- simple assembly through snapping-technology **Klick with Clip**
- IP-Rating: IP64



Mechanical Data

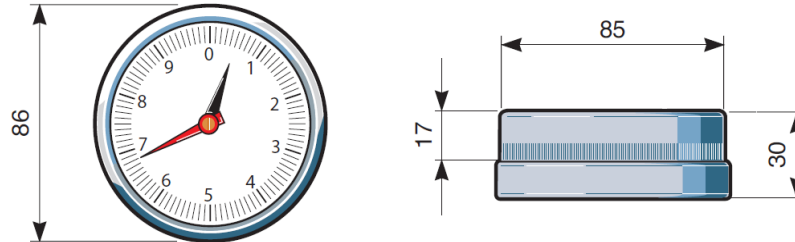
In general	
Material	Technopolymer Shock-proof polycarbonate
Counting Direction	DX clockwise SX anti-clockwise
Temperature	< 80°C
IP-Rating	IP64
I90 / I90F	
Indication	analogue dial scale
Hand	1:1 ratio with hand wheel Transmission Ratio depending on the required shaft revolution
Accessories	
Hand Wheels	I90 P125P, P150P, P175P, P200P I90F P125FP, P150FP, P175FP, P200FP
Applications	I90 Suitable for horizontal or slightly inclined shafts I90F Shafts with any position with torque support
Transmission Ratio	2:1 - 4:1 - 6:1 10:1 - 12:1 - 20:1 - 24:1 - 30:1 - 36:1 - 40:1 - 60:1 - 100:1 - 120:1 - 200:1
Dial Scale	0-6; 0-10; 0-12; 0-20; 10-0-10; 20-0-20; 0-24; 0-25; 0-30; 0-36; 0-40; 0-50; 0-60; 0-80; 0-100
IN90 / IN90F	
Indication	analogue-digital dial scale, counter
Hand	1:1 ratio with hand wheel absolute measurement in 1mm or 0.1 mm increments
Accessories	
hand wheels	IN90 P125P, P150P, P175P, P200P IN90F P125FP, P150FP, P175FP, P200FP
Applications	IN90 Suitable for horizontal or slightly inclined shafts IN90F Shafts with any position with torque support
Divisions	100
Indication after 1 revolution	0000 1 - 0000 2 - 0000 4 - 0000 5 - 0000 6 - 0000 8 - 0001 0 - 0001 5 - 0002 0 - 0002 5 - 0003 0 - 0004 0 - 0005 0 - 0006 -0
Dial Scale	0-10; 0-15; 0-20; 0-25; 0-30; 0-40; 0-50; 0-60; 0-80; 0-100



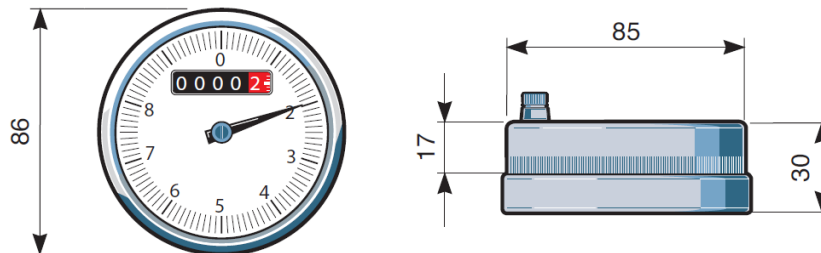
Datasheet

Dimensions

I90



IN90F (with torque support)



Ordering Example

Type I90 - 30 - DX - 1Z - 0-30

I90
 IN90
 I90F = with torque support
 IN90F = with torque support

I90 / I90F
Transmission Ratio

30 = 30:1
 For further Information, see table

IN90 / IN90F
Indication after 1 revolution

0000 4
 For further Information, see table

Counting Direction

DX = clockwise
SX = anti-clockwise

Number of Hands

1Z = 1 hand
2Z = 2 hands

Dial Scale

0-30 = 0-30
 For further Information, see table

Assembling

- Position display in the hand wheel snap in (At I90F / IN90F the pinion gently into the hand wheel in exploiting dividend bore insert!)
- hand wheel on the spindle set,
- Tighten threaded pin - ready!
- Changes can be adjusted as desired via the front dimensional correction screw the position display.