

Datasheet

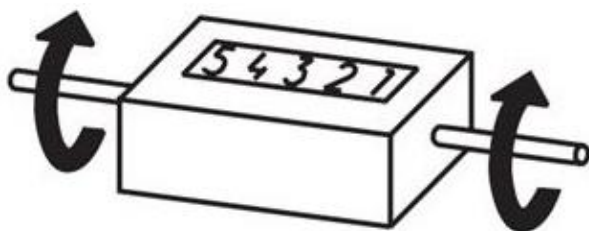
- 5 digits; 6 digits
- Mechanical counters for length measurement
- Zero setting adjustable via lever manually
- Rising to the right or left
- Kind of counting: 1 revolution = 2; 20 digits
- Resolution: 0,1 m or 0,01 m



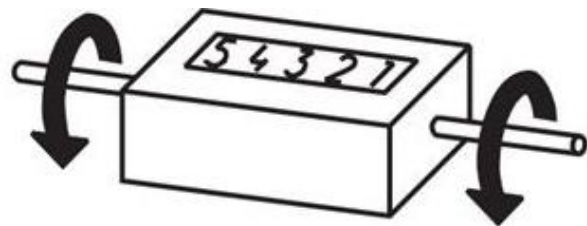
Technical Data

Dimension Shaft	Ø5 mm	
Material Housing	Plastic, glass fiber reinforced	
Wight	~ 130 g (without accessories)	
Display	5-digits 6-digits (on request)	
Digits High	3,5 x 4,5 mm	
Resolution	0,1 m 0,01 m	
Measure Range	0 ... 999,99 m 0 ... 9999,9 m	
Counting Direction	Right increase Left increase	summate or subtract
Kind of Counting	1 Revolution 0 2; 20 digits	
Counting Speed	< 500 digits/min	
Torque	~ 100 Ncm	
Zero Setting	Reset lever	
Operating Temperature	0 °C ... +60°C	
Accessories	With base plate or spring clamp	

Counting Direction



Vom Betrachter **weg**
Zählrichtung: **rechtssteigend R**

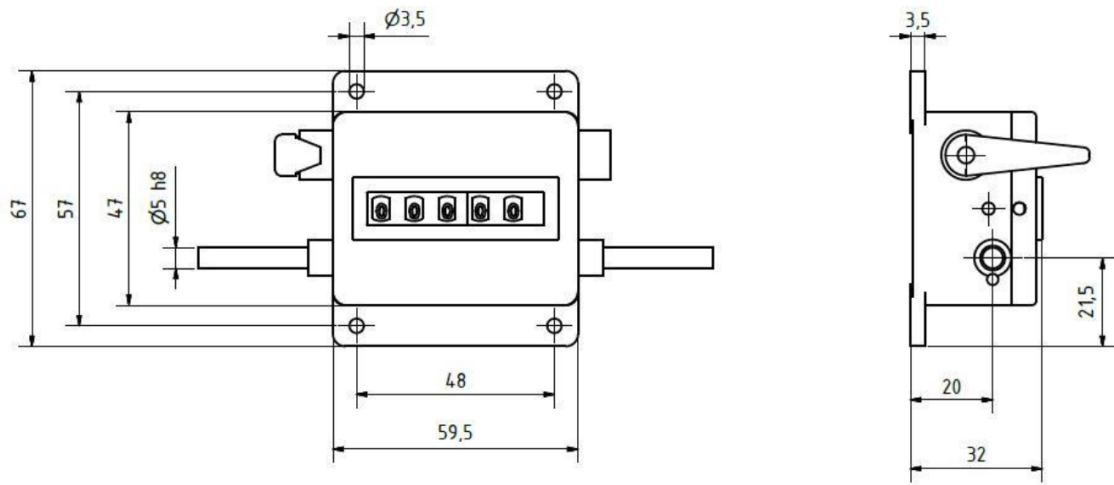


Zum Betrachter **hin**
Zählrichtung: **linkssteigend L**



Datasheet

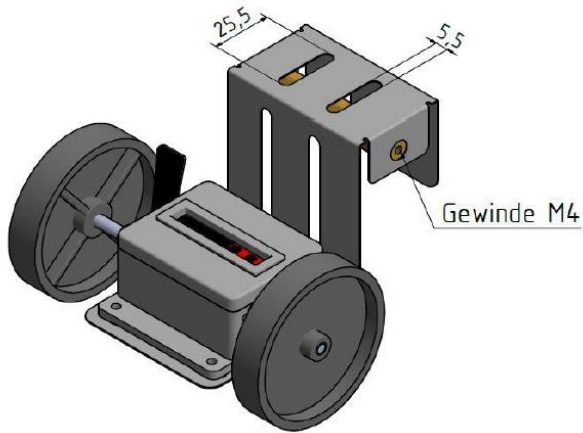
Dimensions



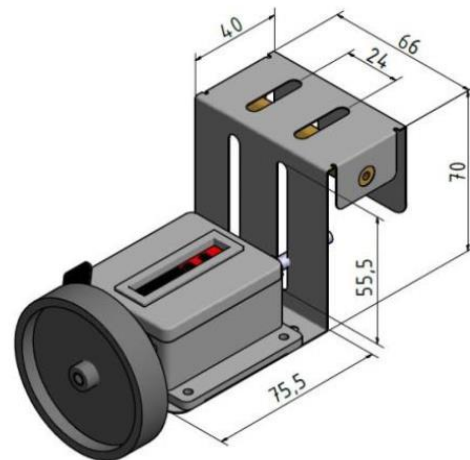
Version

Spring clamp I

Version 1
 (optional 1 or 2 Measuring Wheel)

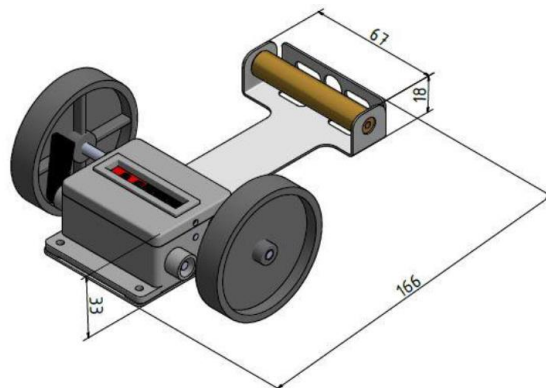


Version 2



Spring clamp II

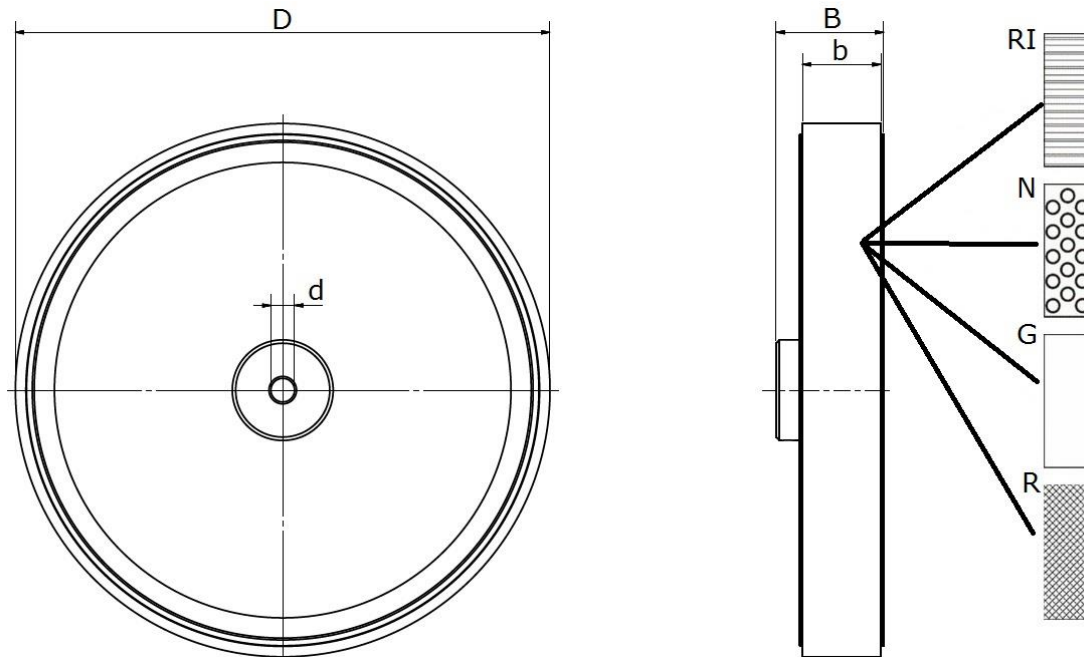
(optional 1 or 2 Measuring Wheel)





Datasheet

Measuring Wheel



Circumference [U]	Wheel-Ø [D]	Wheel-Bridge [B]	Profile-Bridge [b]	Profile of Running Surface			
				[G]	[RI]	[N]	[R]
200 mm	Ø63,66 mm	17 mm	10 mm	x	x	x	x

Our suggestion of the accurate Selection for the measure wheel surface

Material (Profile of Running Surface)	Smooth [G]	crosshatched knurling [RI]	Studded [N]	Corrugated [R]
	Polyurethane			Aluminium
carton / board	X	X	X	X
wood	X	X	X	X
(PE, PVC)	X	X	X	X
textile	X	X	X	
paper	X	X	X	
metal, greasy parts steel	X			
leather	X			
carpet, mat of fibres			X	
flexible tube, cable			X	
glass, synthetic material		X		
painted surface	X	X		
cellular material, synthetic material soft				X

Datasheet

Ordering Example

Meter Counter - Mechanical **MZ/M** - **45** - **0,2** - **L** - **FIV1** - **200** - **G** - **1**

Counter
45

Display Value/ Revolution

0.2 = 0000,2 / 5-digits
0.20 = 000,20 / 5-digits

Counting Direction

L = rising to the left
R = rising to the right

Version

X = without Spring clamp
FIV1 = Spring clamp I / Version 1
FIV2 = Spring clamp I / Version 2
FII = Spring clamp II

Circumference (U = mm)
200

Profile of Running Surface

G = smooth
RI = crosshatched knurling
N = studded
R = corrugated
GG = rubber smooth
GR = rubber corrugated

Measuring Wheel

x = without Measuring Wheel
1 = 1 Measuring Wheel
2 = 2 Measuring Wheels

Further Version on request

***Measuring Wheel Version for MZ/M-45** **MR** - **200** - **AL** - **05** - **G**

Circumference (U = mm)
200

Material Moulding

AL = Aluminium

Diameter Hollow (d)
05 = Ø5 mm

Profile of Running Surface

G = smooth
RI = crosshatched knurling
N = studded
R = corrugated
GG = rubber smooth
GR = rubber corrugated

*Only for use an additional Ordering.