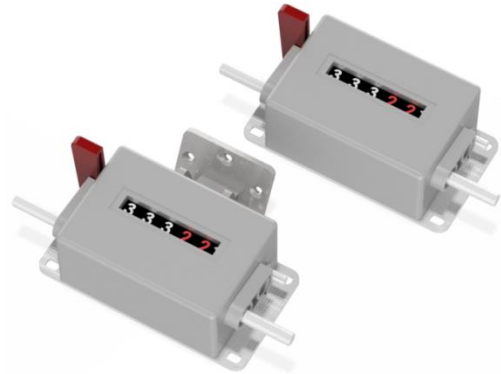


Datasheet

- 5-digits; 6-digits
- mechanical counters for length measurement
- zeroing manually adjustable via reset lever
- left-/right increasing
- direction of counting: 1 revolution = 2; 20; 5; 50 numbers
- resolution: 0,1 od. 0,01 m
- PTB (Physikalisch-Technischen Bundesanstalt) pretested and approved for verifiable measuring devices

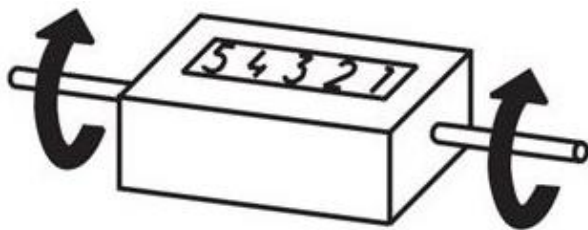


Mechanical Data

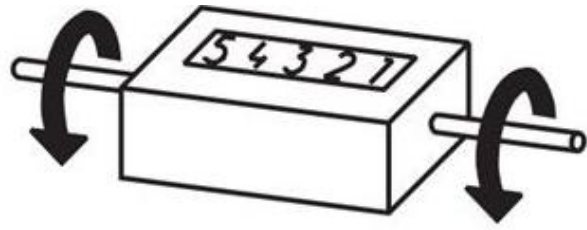
Material	Housing Mounting Plate Hinge	Hostaform POM, grey steel zinc-plated Stahl
Wight	~ 380 g (without accessories)	
Diameter of Shaft	Ø7 mm	
Torque		
Display	5-digits 6-digits	
Digit High	7 mm	
Direction of Counting	right increasing left increasing	adding or subtracting
Way of Counting	1 revolution = 2; 20; 5; 50 numbers	
Counting rate	<60 m/min	
Measurement Range	9999,9 or 9999,99 m/cm	
Revolution	0,1 or 0,01 m	
Zero setting	zero setting lever (Do not let lever snap or make jerky movements)	
PTB-Permission *	1.5 / 87.05 (without hinge)	
Operating Temperature	0 ... +60°C	
Mounting	with Mounting Plate	

* The calibration of the whole measurement device must be applied in all cases by our customers with the verification authorities.

Direction of Counting



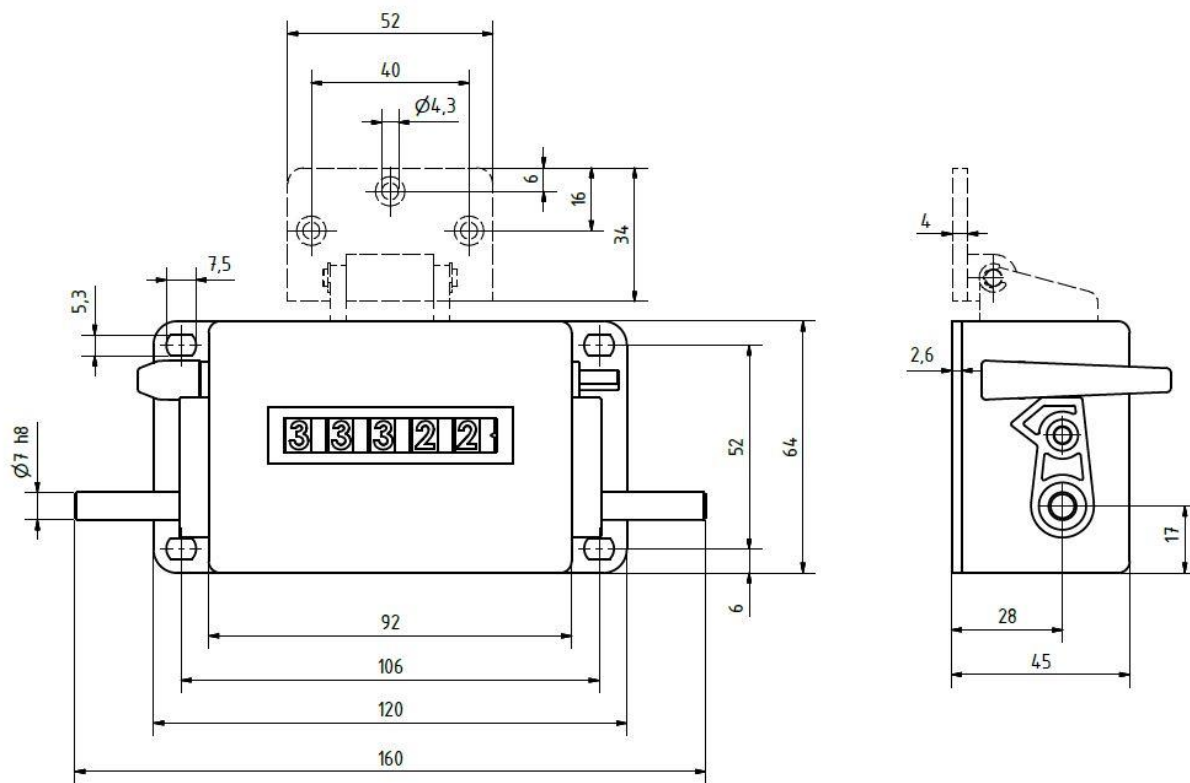
from viewer **away**
 direction of counting: **right increasing R**



from viewer **to**
 direction of counting: **left increasing L**

Datasheet

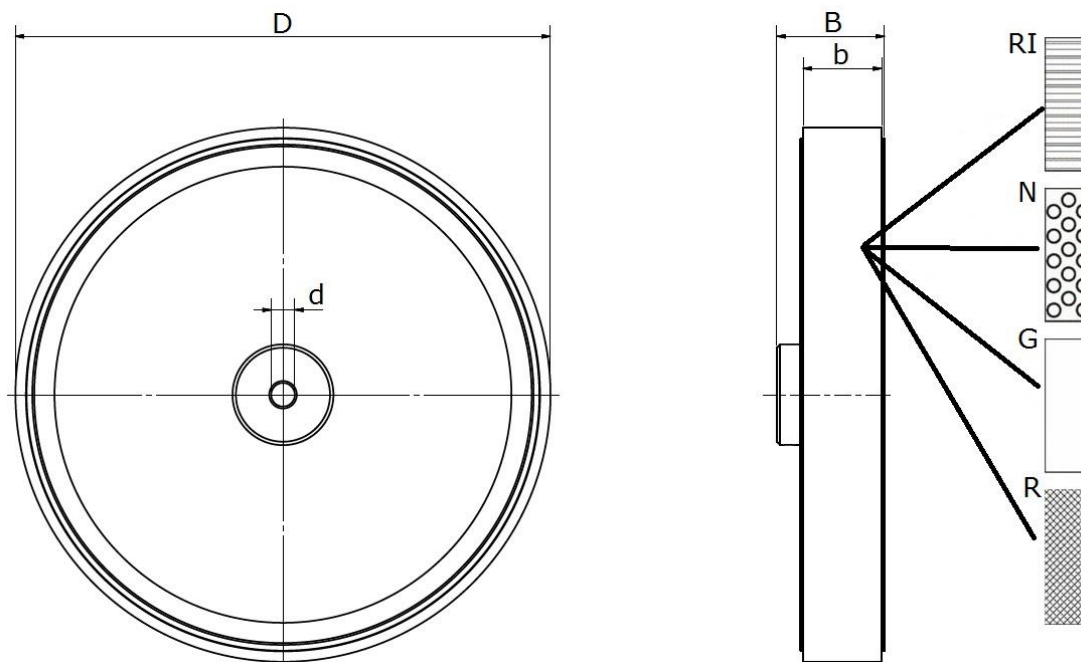
Dimensions



Version

Datasheet

Measuring Wheel



Extent [U]	Wheel-Ø [D]	Wheel-Width [B]	Profile-Width [b]	Surface			
				[G]	[RI]	[N]	[R]
200 mm	Ø63,66 mm	17 mm	10 mm	x	x	x	x
500 mm	Ø159,16 mm	32 mm	23,5 mm	x	x	x	x

Our recommendation for the correct selection of the measuring wheel surface

	smooth [G]	corrugated [RI]	studded [N]	crosshatched knurling [R]
Material	Polyurethan			Aluminium
Carton / Paperboard	X	X	X	X
Wood	X	X	X	X
Plastic (PE, PVC u.v.m.)	X	X	X	X
Textile	X	X	X	
Paper	X	X	X	
Metal, part in Oil, Steel	X			
Leather	X			
Carpet, Mat			X	
Tube, Cable			X	
Glass, Plastic-bottom covering		X		
finish Surface	X	X		
Rubber, Cellular Material, flexible Plastic				X

Further information on measuring wheels can be found on the data sheet "Measuring Wheel"

Datasheet

Ordering Code

Meter Counter / Mechanical MZ/M - 410 - 0000,5 - L - S - 500 - G - 1

Counter
410

Value / Revolution

0000,2 = 5-digits
000,20 = 5-digits
0000,5 = 5-digits
000,50 = 5-digits
00000,2 = 6-digits
0000,20 = 6-digits
00000,5 = 6-digits
0000,50 = 6-digits

Direction of Counting

L = left increasing
R = right increasing

Version

P = PTP permission
S = with hinge

Measuring Wheel Extent (U = mm)

200; **500**

Surface

G = smooth
RI = corrugated
N = studded
R = crosshatched knurling

Measuring Wheel

x = without measuring wheel
1 = 1 measuring wheel
2 = 2 measuring wheels

Further version on request

***Measuring Wheel Version für MZ/M-410 MR - 500 - AL - 07 - G**

Extent (U = mm)
200; **500**

Material blank
AL = Aluminium

Diameter of hole (d)
07 = Ø7 mm

Profile of Bearing Surface

G = smooth
RI = corrugated
N = studded
R = crosshatched knurling

*Use only for a subsequent order of equipment.